

INSTRUMENT APPROACH CHART - ICAO

CAMPBELTOWN

RNP
RWY 11

(ACFT CAT A,B,C,D)

37

40

30

090°

270°

MSA 25NM ARP

30

MSA 10NM ARP

AFIS 125.905

CAMPBELTOWN INFORMATION

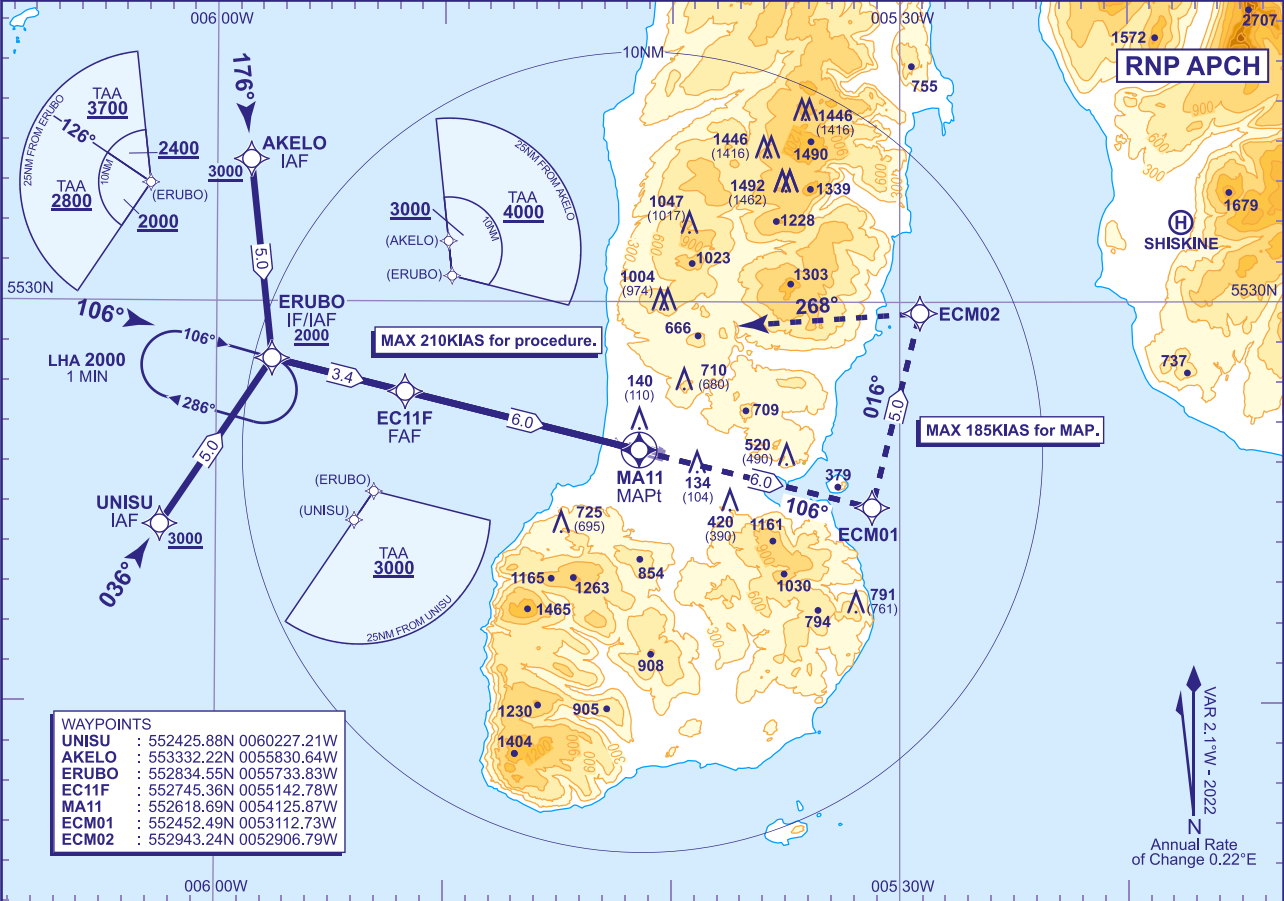
AD ELEVATION 42

THR ELEVATION 30

OBSTACLE ELEVATION 1492 AMSL (1462) (ABOVE THR)

BEARINGS ARE MAGNETIC

TRANSITION ALTITUDE 3000



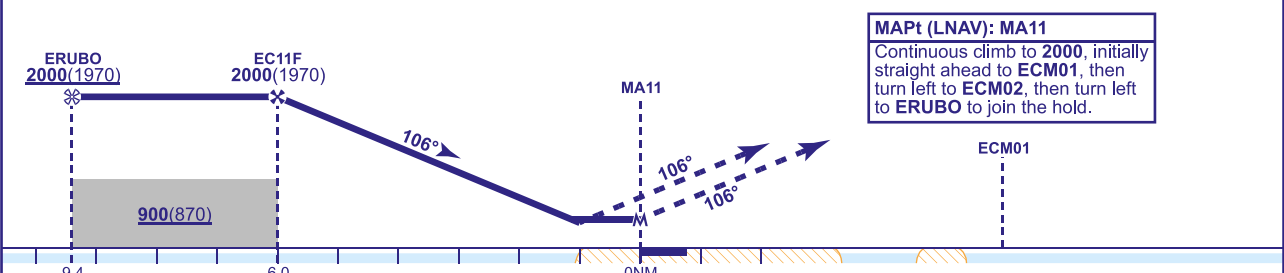
WAYPOINTS

UNISU	: 552425.88N 0060227.21W
AKELO	: 553332.22N 0055830.64W
ERUBO	: 552834.55N 0055733.83W
EC11F	: 552745.36N 0055142.78W
MA11	: 552618.69N 0054125.87W
ECM01	: 552452.49N 0053112.73W
ECM02	: 552943.24N 0052906.79W

RECOMMENDED PROFILE Gradient 5.24%, 320FT/NM

NM to MA11	5	4	3	2	1
ALT(HGT)	1690(1660)	1370(1340)	1040(1010)	720(690)	400(370)

TCH 50



Aircraft Category		A	B	C	D	Rate of descent FT/MIN	G/S KT	160	140	120	100	80
OCA (OCH)	LNAV 2.5% MAP	870(840)	870(840)	870(840)	870(840)		850	740	640	530	420	
	LNAV 5.0% MAP	500(470)	500(470)	500(470)	500(470)							
Total Area		N/A	N/A	N/A	N/A							
VM(C)OCA (OCH AAL)	North of RWY 11/29	890(848)	1010(968)	1550(1508)	1750(1708)							

- NOTES
- FAT is offset 2.25° from the RWY C/L.
 - Missed approach climb gradient 5% required up to 1200.
 - Use of this procedure is strictly PPR from the aerodrome operator.
 - Prior to commencing the procedure, pilots are to broadcast on AFIS with flight details and intentions.

CHANGE (1/25): ERUBO TAA SECTOR 10NM ADDED.